



*Designed By
Chefs For Chefs®*



**CHEF JACKETS • PANTS • APRONS
HEADWEAR • TOWELS**



Rev. 3/16



Our high performance poly-cotton fabrics outperform the competition.

moisture management - Chef-tex is comprised of nano fibers that are $\frac{1}{100}$ th the size of a human hair and act as a shield around the main fiber to help Chef-tex dry 33% faster than the competition.

comfort - This 6.75 oz. fabric is smooth and luxurious as a result of a patented technology to ensure the softness is permanent and consistent, even after multiple washings.

stain release - The fabric handles the toughest kitchen stains. Our patented process, directly applied to the fiber, prevents spreading and re-disposition in the wash. This is not a topical additive, which typically washes off; instead, this stain release performs throughout the life of the garment.

color retention - These fabrics hold their color through the life cycle of the product, even in whites. Our deep dye technology resists fading from sunlight, washings and oxidation.

shape retention - This fabric holds its form better and longer than fabrics used in comparable products, leading to a wrinkle resistant, longer lasting jacket.

Chef-tex Breeze - Offers all the attributes of Chef-tex, but is 20% lighter in weight. It's the perfect choice to keep you cool when the heat is on.

OTHER QUALITY FABRICS



LUXURY COTTON

Our luxury fine line 5.5oz (156 g) cotton fabric offers an exceptional lightweight Egyptian cotton feel for unmatched breathability, comfort, and softness against the skin.



POLY-COTTON BLENDS

These blends are durable, comfortable, and an economic solution for the Chef. With a range from 3.5-6 oz. (99-198 g) they offer high resilience and great performance.

OUR 3 QUALITY LEVELS



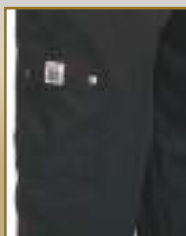
GOOD



BETTER



BEST



Foodservice Apparel

4 **Chef Jackets
& Tech Coat**
Chef Revival
Knife & Steel®
24/7

34 **Shirts**

38 **Chef Pants**
Chef Revival
Knife & Steel®
24/7

43 **Aprons**
Chef Revival
Knife & Steel®
24/7

70 **Headwear**

**Bar & Kitchen
76 Towels**

**Embroidery &
Monogramming
80**

**Sizing Chart
82**

J200BK

Double
Stitched

Performance Series





J200BK

Breathable
Mesh on
Back of Jacket



JACKETS ARE EASILY EMBROIDERED WITH YOUR FAVORITE SEAL OR LOGO

WWW.CHEFREIVAL.COM | 800.352.CHEF



**BRYAN LINDSEY
EXECUTIVE CHEF
RUTLEDGE CAB CO.
CHARLESTON, SC**



Performance Series

Breathable
Mesh on
Back of Jacket



- Breathable Mesh On Back
-
- Light Weight 5.5 Oz.
-
- Side Vents
-
- Pen/Thermometer Pocket
-
- Double Stitched Throughout



Double
Stitched

Breathable
Mesh on
Back

J200

Item	Description	Material	Button Style
LONG SLEEVE:			
J200-*	White Long sleeve	Poly-cotton 65/35 blend	Chef logo white
J200BK-*	Black Long sleeve	Poly-cotton 65/35 blend	Chef logo black
SHORT SLEEVE:			
J205-*	White Short sleeve	Poly-cotton 65/35 blend	Chef logo white
J205BK-*	Black Short sleeve	Poly-cotton 65/35 blend	Chef logo black

* **Sizes:** XS-3X

BUTTON STYLES:



Chef logo white



Chef logo black

JACKETS ARE EASILY EMBROIDERED WITH YOUR FAVORITE SEAL OR LOGO

WWW.CHEFREIVAL.COM | 800.352.CHEF



White
Piping

J007

Hand-rolled
buttons

Luxury
Cotton

Corporate Jackets



Chef-tex
Breeze™

Available in
sizes: XS-8X

White Piping

J006

Cloth
covered
buttons



Chef-tex™
5.5 oz.

J008

LAURENT MANRIQUE,
CORPORATE EXECUTIVE CHEF
MILLESIME
NEW YORK, NY

BUTTON STYLES:



Cloth covered



Hand-rolled



Cross collar neckline

Drop shoulder and yoke
for comfort

Pen/thermometer pocket

12 buttons

Chef-tex Breeze™
5.5 oz. fabric



Chef-tex™
5.5 oz.

Ladies Jacket
specifically
tailored for
Women



LJ008

KIRSTEN MASSMANN
RESEARCH NUTRITIONIST
CHARLIE BAGGS, INC.

Side-slits allow for
better fit and ease
of movement



MENS

Item	Description	Material	Button Style
J007-*	White w/ White piping	Luxury-cotton	Hand rolled
J006-*	White w/ White piping	Chef-tex Breeze™	Cloth covered
J008-*	White w/ Black piping	Chef-tex Breeze™	Cloth covered

* **Sizes:** XS-5X (up to 8X for #J006 ONLY)

LADIES

Item	Description	Material	Button Style
LJ008-*	White w/ Black piping	Chef-tex Breeze™	Cloth covered

* **Sizes:** XS-2X



Chef-tex™
6.75 oz.

J044

JOEL SCHAEFER
PRESIDENT
ALLERGY CHEFS, INC.

Brigade Jackets

BUTTON STYLES:



Black
push-through



White
push-through



Traditional Collar

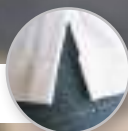
Drop shoulder and yoke
for comfort

Chest welt pocket

Pen/thermometer pocket

12 push-through
stud buttons

Chef-tex™ 6.75 oz. fabric



Side vents allow
for better fit and
ease of movement

Chef-tex™
6.75 oz.

LJ044

Ladies Jacket
specifically
tailored for
Women

*KELSEY MCCREIGHT
SOUS CHEF
THE IRON HOUSE HOTEL
MILWAUKEE, WI*

MENS

Item	Description	Material	Button Style
J044-*	White w/ Black piping	Chef-tex™	Black push-through
J023-*	White w/ White piping	Chef-tex Breeze™	White push-through

* **Sizes:** XS-5X

LADIES

Item	Description	Material	Button Style
LJ044-*	White w/ Black piping	Chef-tex™	Black push-through

* **Sizes:** XS-2X

WH

Cuisinier Jackets

LJ025BK



Cuisinier Jackets **LONG SLEEVE**

BUTTON STYLE:



Cloth covered

Traditional collar

Drop shoulder and yoke
for comfort

Pen/thermometer pocket

12 buttons

Chef-tex Breeze™
5.5 oz. fabric



Chef-tex Breeze™

J017BK

NICK STELLINO
COOKING WITH FRIENDS

LADIES

Item	Description	Material	Button Style
LJ025BK-*	Black Long sleeve	Chef-tex Breeze™	Black cloth covered
* Sizes: XS-2X			

MENS

Item	Description	Material	Button Style
J017BK-*	Black Long sleeve	Chef-tex Breeze™	Black cloth covered
* Sizes: XS-5X			





Tailored
specifically
for ladies

LJ025

Chef-tex
Breeze™

DIANNA FRICKE
CORPORATE EXECUTIVE CHEF,
CRC, CWPC
SMITHFIELD FOODS, BOISE, ID

Cuisinier Jacket

LONG SLEEVE

BUTTON STYLE:



Cloth covered

Traditional collar

Drop shoulder and yoke
for comfort

Pen/thermometer pocket

12 buttons

Chef-tex Breeze™
5.5 oz. fabric



Chef-tex
Breeze™

J015

BRIAN AVERNA
SENIOR EXECUTIVE
CHEF

LADIES

Item	Description	Material	Button Style
LJ025-*	White Long sleeve	Chef-tex Breeze™	White cloth covered
* Sizes: XS-2X			

MENS

Item	Description	Material	Button Style
J015-*	White Long sleeve	Chef-tex Breeze™	White cloth covered
* Sizes: XS-5X			

WH



Luxury
Cotton

Short
Sleeve

Extra
Pocket

J057

Cuisinier Jacket

SHORT SLEEVE

Item	Description
J057*	White Short sleeve w/extra pocket Luxury Cotton, White cloth covered buttons

* **Sizes:** XS-5X

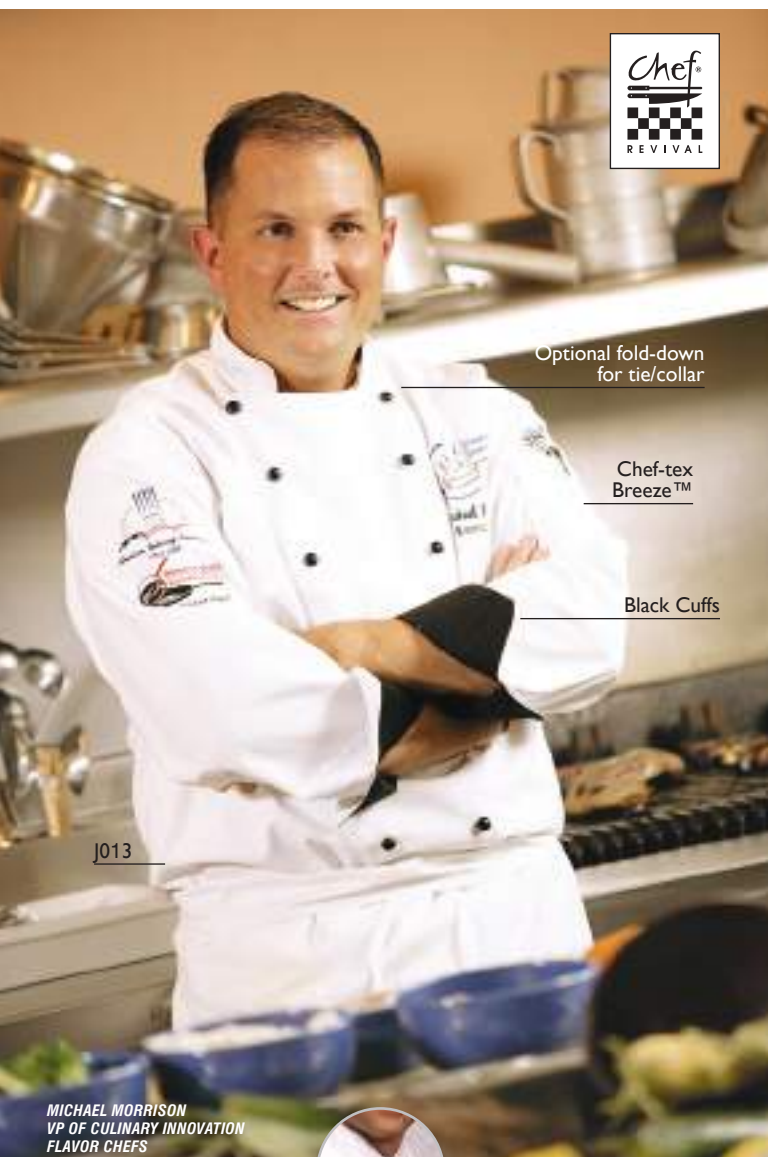
WH

BUTTON STYLE:



Cloth covered

- Traditional collar
- Drop shoulder and yoke for comfort
- Pocket on Chest
- Pen/thermometer pocket
- 12 buttons
- Luxury Cotton



Optional fold-down
for tie/collar

Chef-tex
Breeze™

Black Cuffs

J013

MICHAEL MORRISON
VP OF CULINARY INNOVATION
FLAVOR CHEFS

Executive BLACK CUFF

Item	Description
J013-*	White Long sleeve w/Black cuffs Chef-tex Breeze™

* **Sizes:** XS-5X

WH



Extra buttons for ability to fold down
and give visibility to tie/collar.

Traditional collar

Drop shoulder and yoke
for comfort

Chest welt pocket

Pen/thermometer
pocket

Push-through buttons

Chef-tex Breeze™
5.5 oz. fabric

BUTTON STYLE:



Black push-through

JACKETS ARE EASILY EMBROIDERED WITH YOUR FAVORITE SEAL OR LOGO

WWW.CHEFREIVAL.COM | 800.352.CHEF

Chef-tex
Breeze™

Long sleeve

J030BK

MICHAEL HILLYER
THE CAPITAL GRILLE

Traditional Black **LONG & SHORT SLEEVE**

BUTTON STYLE:



Chef Logo, Black

BK

Traditional collar

Drop shoulder and yoke
for comfort

Pen/thermometer
pocket

10 buttons

Chef-tex Breeze™
5.5 oz. fabric



Chef-tex
Breeze™

J045BK

Short
sleeve



JOSEPH CIMINERA
CEC PERSONALITY & AUTHOR OF THE CELEBRATED BOOK,
"NEW AMERICAN COOKING" WWW.TASTETHISTV.COM

Item	Description	Material	Button Style
J030BK-*	Black Long sleeve	Chef-tex Breeze™	Chef logo black
J045BK-*	Black Short sleeve	Chef-tex Breeze™	Chef logo black

* **Sizes:** XS-5X

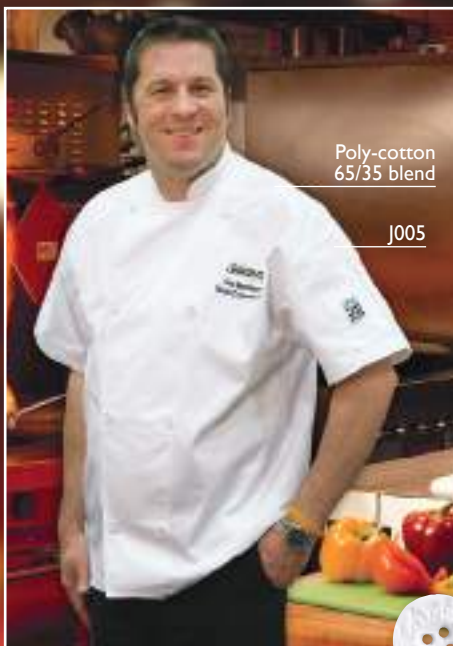
BK

BUTTON STYLE:



Chef Logo, Black





Poly-cotton
65/35 blend

J005

GUY BEARDSMORE
DIRECTOR CULINARY
DEVELOPMENT
SUGAR FOODS CORP.



Knife & Steel® Short Sleeve





J005BK

Poly-cotton
65/35 blend

Long
sleeve

J002

KITT FRASER
EXECUTIVE CHEF
ENO VINA

Poly-cotton
65/35 blend

Knife & Steel®

Long Sleeve Jackets

BUTTON STYLES:



Chef Logo



Cloth
Knot

Drop shoulder and yoke
for comfort

Pen/thermometer
pocket

8 buttons

Poly-cotton 65/35 blend



LJ027

Long sleeve

Poly-cotton
65/35 blend

GLEND A MURRAY
CEC DEVELOPMENT CHEF
SARGENTO FOODS, INC.

	Item	Description	Material	Button Style
	SHORT SLEEVE:			
	J005-*	White Short Sleeve, Poly-cotton 65/35 blend		Chef logo White
	J005BK-*	Black Short Sleeve, Poly-cotton 65/35 blend		Chef logo Black
	LONG SLEEVE:			
MENS	J002-*	White Long Sleeve, Poly-cotton 65/35 blend		Chef logo White
	J003-*	White Long Sleeve, Poly-cotton 65/35 blend		Cloth Knot
	LONG SLEEVE:			
LADIES	LJ027-*	White Long Sleeve, Poly-cotton 65/35 blend		Chef logo White
	LJ028-*	White Long Sleeve, Poly-cotton 65/35 blend		Cloth Knot

* **Sizes:** XS-5X, except J002 is available XS-8X



Hidden
Snap

J070GR

Poly-cotton
65/35 blend

3/4 Sleeve

Side Vents

J070BR

Side Vents

Euro Jackets

SLIM FIT

Item	Description	Button Style
J070-*	White , 3/4 sleeve jacket	Hidden snap
J070BK-*	Black , 3/4 sleeve jacket	Hidden snap
J070BR-*	Brown , 3/4 sleeve jacket	Hidden snap
J070GR-*	Grey , 3/4 sleeve jacket	Hidden snap

* Sizes: XS-4X

WH

BK

BR

GR

3/4 Sleeve

Hidden snap closure

Side vents,
drop shoulder and
yoke construction

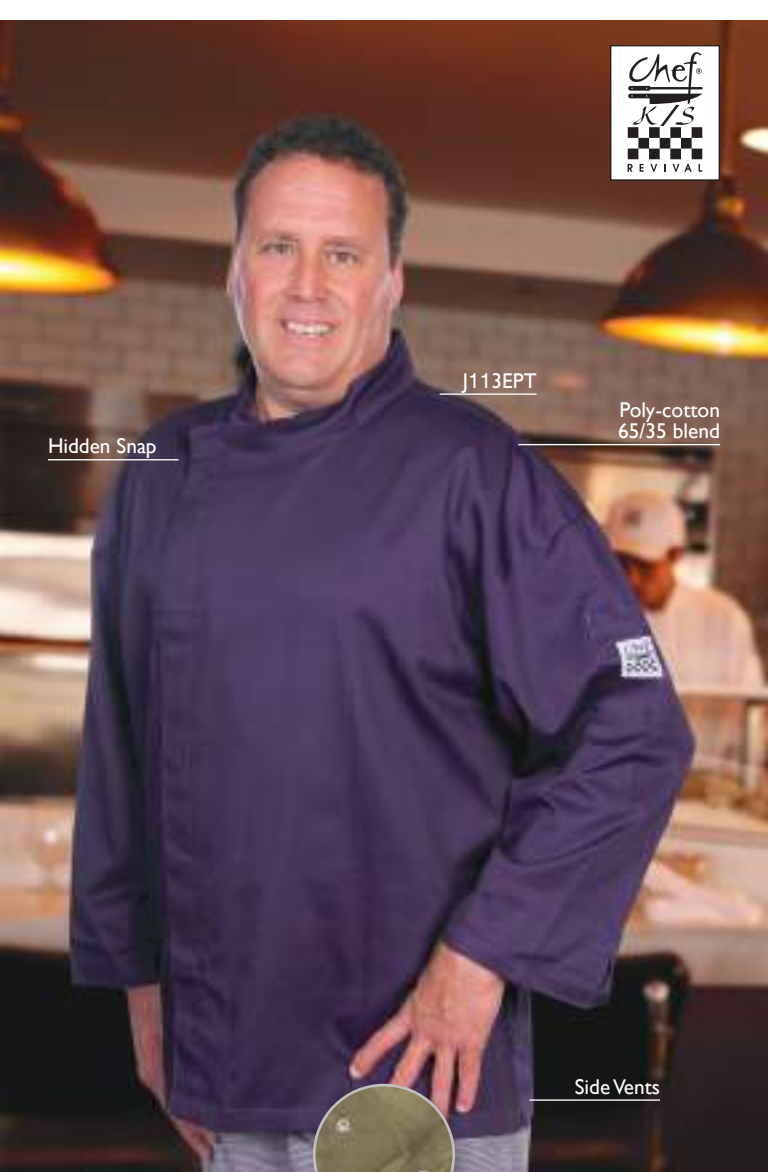
Pen/thermometer
pocket

Durable Poly-cotton
65/35 blend

Slim Fit: You may wish to order
one size larger than you are used to

JACKETS ARE EASILY EMBROIDERED WITH YOUR FAVORITE SEAL OR LOGO

WWW.CHEFREVLAL.COM | 800.352.CHEF



Hidden Snap

J113EPT

Poly-cotton
65/35 blend

Side Vents



Hidden snap
style button

Knife & Steel®
Colors

Item	Description	Button Style
J113EPT-*	Eggplant jacket	Hidden snap
J113EXP-*	Espresso jacket	Hidden snap
J113OG-*	Olive jacket	Hidden snap

* Sizes: XS-5X



- Drop shoulder and yoke for comfort
-
- Pen/thermometer pocket
-
- Side vents
-
- Poly-cotton 65/35 blend



Black Yoke

J027



Metro Jacket

Item	Description	Button Style
J027-*	White, w/Black yoke	Hidden Snap
* Sizes: XS-5X		

Hidden
snap closure

•
Chef-tex™
65/35 Poly-cotton





Chef Revival jackets are
used by top professionals
from TV chefs to
Famous Restaurants
around the world

For over 30 years –
A brand you can trust
for quality and innovations.



Basic Jackets

J100



WH

Top Selling Jackets

BUTTON STYLES:



Clear Pearl



Black Pearl



Cloth
Knot

Traditional collar

•
Double breasted

•
Pen/thermometer
pocket

•
Poly-cotton blend

Front chest pocket J100 only

Crew Jackets



J049



J061BK

Black

BASIC JACKETS

Item	Description	Material	Button Style
J100-*	White Long Sleeve, with front chest pocket	Poly-cotton blend	Clear Pearl
J105-*	White Short Sleeve	Poly-cotton blend	Clear Pearl

Sizes: XS-3X

CREW JACKETS

Item	Description	Material	Button Style
J049-*	White Long Sleeve	Poly-cotton blend	Clear Pearl
J050-*	White Long Sleeve	Poly-cotton blend	Cloth Knot
J061BK-*	Black Long Sleeve	Poly-cotton blend	Black Pearl

Sizes: XS-5X

JACKETS ARE EASILY EMBROIDERED WITH YOUR FAVORITE SEAL OR LOGO

WWW.CHEFREIVAL.COM | 800.352.CHEF



Hidden snap style button

Hidden Snap

Poly-cotton blend

J020SP



Fresh Snap Jackets

Item	Description	Button Style
J020MT-*	Mint , Short sleeve jacket	Hidden snap
J020SP-*	Spice , Short sleeve jacket	Hidden snap
J020TM-*	Tomato , Short sleeve jacket	Hidden snap

* **Sizes:** XS-5X

- Cross collar neckline
- Pen/thermometer pocket
- Short sleeves
- Available in fresh food colors
- Poly-cotton blend 65/35



MINT



SPICE



TOMATO

Black Collar

J134MT

Fresh Jackets



Flat plastic
black button

Item	Description	Button Style
J134MT-*	Mint , 3/4 sleeve w/ black trim	Black
J134SP-*	Spice , 3/4 sleeve w/ black trim	Black
J134TM-*	Tomato , 3/4 sleeve w/ black trim	Black

* **Sizes:** XS-5X



MT

MINT



SP

SPICE



TM

TOMATO

Black traditional
collar

Pen/thermometer
pocket

3/4 length sleeves

8 buttons

Available in
fresh food colors

Poly-cotton
blend 65/35



CS006WH



CS006BK



Cook Shirts

Item	Description	Button Style
CS006WH-*	White short sleeve	Snap closure
CS006BK-*	Black short sleeve	Snap closure

* **Sizes:** XS-4X

- Lightweight material
-
- Front snap buttons
-
- Chest pocket
-
- Poly-cotton blend





Chef Revival® T-Shirts



Comfortable Cotton T-Shirts

An extra way to show off your Chef devotion

WH

BK

Item	Description
TS001-*	White short sleeve
TS002-*	Black short sleeve

* **Sizes:** M-2X



Men's & Women's Teflon® Treated Twill Shirts

7217 Black

65/35 Poly-cotton
blend, 6.5 oz.

Black

White

Tan

Yellow

Maize

Orange

Red

Burgundy

Purple

Turquoise

Light
Blue

Royal
Blue

Navy
Blue

Kelly
Green

Hunter
Green

Soft touch finish, easy care

•
Treated with DuPont™ Teflon®
fabric protector

•
Wrinkle resistant

•
Button down collar

•
Adjustable cuffs

•
Double back yoke

•
Button sleeve placket

•
2 Side back pleats

•
Patch pocket with
pencil compartment

•
Classic fit

•
Bone horn buttons

7217S
White



Item	Description
7217-*	Men's Long sleeve Twill
7217S-*	Men's Short sleeve Twill
6217-*	Women's Long sleeve Twill
6217S-*	Women's Short sleeve Twill

* **Sizes:** XS-6XL, Talls LT-3XLT

Men's & Women's Teflon® Treated Polo Shirts (No pocket)

7203 Red



65/35 Poly-cotton
blend, 5.7 oz.

Easy care

- 65/35
poly-cotton
blend
5.7 ounce

- Curl-free collar,
classic fit, no
pocket

Black

White

Tan

Yellow

Maize

Orange

Red

Burgundy

Purple

Turquoise

Light
Blue

Royal
Blue

Navy
Blue

Kelly
Green

Hunter
Green

Extra durable

- Treated with
DuPont™ Teflon®
fabric protector

- Rib knit collar &
cuffs

- Bone buttons

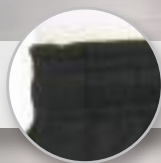
Sizes XS-6XL

6203
Hunter
Green



Item	Description
7203-*	Men's Short sleeve Polo
6203-*	Women's Short sleeve Polo

* **Sizes:** XS-6XL,





Pants



SIDE POCKETS

Tailored
front panel

LP001HT

P023HT

Cargo Pants



MENS

Item	Description
P023HT.*	Houndstooth , Yarn dyed poly-cotton
P024BK.*	Black , Poly-cotton blend
* Sizes: XS-5X	

6 total pockets
Zip fly closure
2" elastic waist
Drawstring

LADIES

Item	Description
LP001HT.*	Houndstooth , Yarn dyed poly-cotton
LP002BK.*	Black , Chef-tex Breeze™
* Sizes: XXS-3X	

4 total pockets
Tailored front panel
comfortably fits curves
Elastic waistband in back
Drawstring



Executive Pants



Item	Description
P017BK-*	Black pants, Chef-tex Breeze™
P018HT-*	Houndstooth pants, Yarn dyed poly-cotton

* **Sizes:** XS-5X



Relaxed fit, pleated front
Button and zip fly closure
2 side pockets and 1 rear pocket
Drawstring

P017BK



Chef Trousers

Item	Description
P034HT-*	Houndstooth trousers, Yarn dyed poly-cotton
P034BK-*	Black trousers, Chef-tex Breeze™

* **Sizes:** XS-5X

Relaxed fit
Belt loops
2 side pockets and
2 rear pockets
Zip fly with snap



P034HT

Slim Fit Pants



Item	Description
P014BK-*	Black pants, Poly-cotton blend
P015HT-*	Houndstooth pants, Yarn dyed poly-cotton

* **Sizes:** XS-5X

Streamlined fit
Elastic waistband with zip fly closure
2 side pockets and 2 rear pockets

P014BK



Baggy Pants



Item	Description
P020BK-*	Black pants, Poly-cotton blend
P020HT-*	Houndstooth trousers, Poly-cotton blend

* **Sizes:** XS-8X



2" elastic waistband
Drawstring
Relaxed fit
2 side pockets and
2 rear pockets

P020BK



E-Z™ Fit Pants

Item	Description
P004HT-*	Houndstooth pattern, Yarn dyed poly-cotton
P002BK-*	Black , Poly-cotton blend
P040WS-*	Black/White pinstripe , Yarn dyed poly-cotton

* **Sizes:** XS-5X



Elastic waistband with zip fly closure
2 side pockets and 2 rear pockets



P040WS



Cook Pants



Item	Description
P201CPZ-*	White pants, Poly-cotton blend

* **Available waist sizes:**

30" (76 cm)	32" (81 cm)	34" (86 cm)
36" (91 cm)	38" (97 cm)	40" (102 cm)
42" (106 cm)	44" (112 cm)	46" (117 cm)

White

Elastic waistband with snap/zipper
Pants come unhemmed

P201CPZ

Aprons





*Designed By
Chefs For Chefs®*

Tools you can trust

Why settle for anything less? Chef Revival® aprons offer unmatched comfort, consistent quality and are made to last. We use only the highest quality fabrics to ensure comfort and consistent color. Corners are stitched to resist tearing and pocket droop. Chef Revival® aprons are designed to work as hard as you do.



QUALITY FABRICS



QUALITY DESIGN



QUALITY STITCHING

When ordering aprons, specify color choice after item number
Apron pockets referenced to hold original iPad, not iPad Pro

OUR 3 QUALITY LEVELS



GOOD



BETTER



BEST



Chef Bib Apron

When you need to make a statement.

Our line of premium printed aprons provides a professional style while also creating a fun image and attitude.

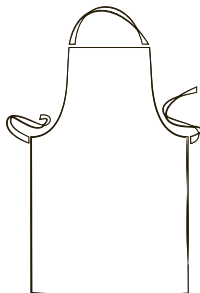
Adjustable Neck Strap

•
Front Pocket

•
Long 43" Ties on Each Side

•
5.7 oz. Poly-cotton blend

Apron Shown: 619BA-WS



619BA-*

Front Pocket

29"w x 38"h
(74 x 97 cm)

***WH, BK,
WS - Pinstripe**

WH

BK

WS

* Specify color choice after item number

APRONS ARE EASILY EMBROIDERED WITH YOUR FAVORITE SEAL OR LOGO

WWW.CHEFREIVAL.COM | 800.352.CHEF



A005

28" w x 30" h
(71 x 76 cm)

WH -White

WH

A009BK

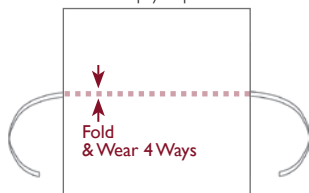
28" w x 30" h
(71 x 76 cm)

BK -Black

BK

Four-Sided Chef Apron

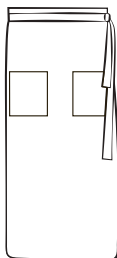
A durable cotton-poly blend makes our Chef Bistro Apron an ideal choice for hard-working chefs and cooks. 4-sided construction means you can simply flip sides and have a clean, fresh-looking apron.



7.5 oz. Cotton-poly blend

Tangle-free Ties 45" Long on Each Side

Apron Shown: A009BK



A008

35"w x 38"h
(89 x 97 cm)

WH - White

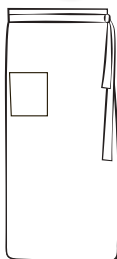
WH

A011BK

28"w x 33"h
(71 x 84 cm)

BK - Black

BK



Bistro Aprons with Pocket(s)

Tangle-free ties and hip patch pocket(s), these Bistro Aprons are an ideal choice for hard-working chefs and cooks.

Tangle-free Ties 45" Long on Each Side

A008 Left & Right Hip Patch Pockets • 100% Cotton

A011BK Right Hip Patch Pocket • 7.5 oz. Cotton-poly blend

Apron Shown: A008

APRONS ARE EASILY EMBROIDERED WITH YOUR FAVORITE SEAL OR LOGO

WWW.CHEFREIVAL.COM | 800.352.CHEF





607BA-WH



Knife & Steel® Bistro Aprons with Pockets

When you need to look good.

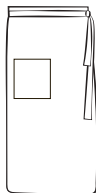
These premium quality aprons are made from heavyweight material and have extra long self-ties to make you look and feel your best.

Pocket on 607BA-2 can hold iPad

Long 45" Ties on Each Side

7.5 oz. Cotton-poly blend

Apron Shown: 607BA-BK



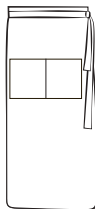
607BA-*

One side pocket

33"w x 30"h
(84 x 76 cm)

***WH** -White

***BK** - Black



607BA-2-*

Two middle pockets

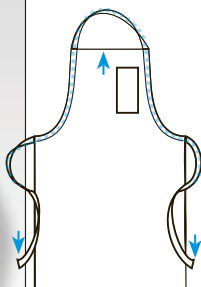
28"w x 34"h
(71 x 86 cm)

***WH** -White

***BK** - Black

WH

BK



411BA-WH

Adjustable
tie/neckstrap

Pencil Pocket
29"w x 34"h
(74 x 86 cm)

WH - White

WH

412BA-BK

Adjustable
tie/neckstrap

Pencil Pocket
29"w x 34"h
(74 x 86 cm)

BK - Black

BK

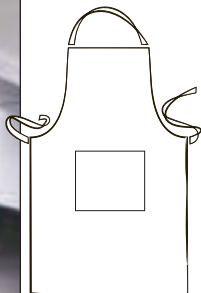
NEW! *Knife & Steel®*
Adjustable Bib Apron

This apron with Pencil Pocket has a 1"-wide continuous strap which goes up behind the neck and down the other side of the apron.
Pull the tie to lengthen or shorten apron.

Pencil Pocket • Adjustable Neckstrap

Long 45" Ties on Each Side • Cotton-poly 55/45

Apron Shown: 411BA-WH



401BA

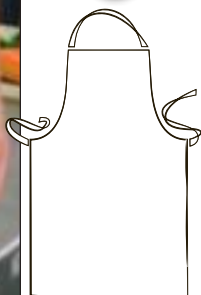
Adjustable
Neck Band

Front Pocket

5"w x 34"h
(63 x 86 cm)

WH - White

WH



401BA-NP

Adjustable
Neck Band

No Pocket

25"w x 34"h
(63 x 86 cm)

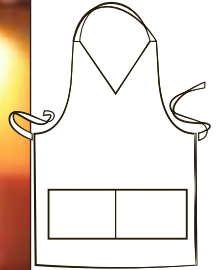
WH - White

Knife & Steel® Bib Aprons

34" Long Bib Apron has adjustable neck strap.

Adjustable Neck Band • Poly-cotton blend 65/35

Apron Shown: 401BA



VNA3840-BK

Tuxedo V-Neck

2-Pockets

28" w x 32" h
(71 x 81 cm)

BK - Black

BK

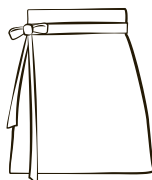
Knife & Steel® Tuxedo Apron

Designed to be worn with a tuxedo shirt or shirt and tie. The v-neck cut adds sophistication. Adjustable neck strap and extra-long self ties for perfect fit.

V-Neck Strap • 2-Pocket Compartment
Long 45" Ties on Each Side • 7.5 oz. Cotton-poly blend

Apron Shown: VNA3840-BK





403FW

Fold & Wear
4 Ways

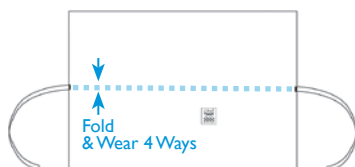
Folds to:
28" w x 16" h
(71 x 41 cm)

WH -White

WH

4-Way Waist Apron

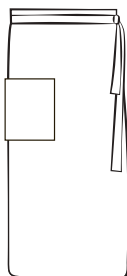
4-sided short Waist Apron is designed to stand up to the demands of foodservice environments while keeping you looking professional. The extra sides allow you to flip to a clean side without having to locate another "clean" apron.



Long 45" Ties on Each Side

7.5 oz. Cotton-poly blend

Apron Shown: 403FW



607PS1-BK

One side pocket

28"w x 34"h
(71 x 86 cm)

BK - Black

BK

Knife & Steel® Bistro Bar Apron with Side Pocket

This Bistro Apron is durable and enhances image. This apron features extra long self-ties and one side pocket for holding guest checks and pens. Available in black only.

Long 41" Ties on Each Side

1 Side Pocket • 100% Spun Polyester

Apron Shown: 607PS1-BK





402WA

30" w x 33" h
(76 x 84 cm)

WH -White

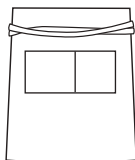
WH

Knife & Steel® Two-Sided Bistro Apron

Waist Apron is designed to stand up to the demands of culinary educational and commercial foodservice environments while keeping you looking professional. The extra side allows you to flip to a clean side without having to locate another "clean" apron.

Long 45" Ties on Each Side • 7.5 oz. Cotton-poly blend

Apron Shown: 402WA



607HBA2-*

Two center
pockets

28" w x 19" h
(71 x 48 cm)

*WH, BK



* Specify color
choice after
item number.
Example:
607HBA2-WH

Knife & Steel® Half Bistro Apron with Pockets

Our Half Bistro Apron enhances image and offers generous storage space. This waist apron has extra long fashion self-ties and features 2 front center pockets to hold iPad, guest checks, check presenters, pens and more.

2 Center Pockets can hold iPad

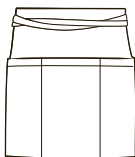
Long 45" Ties on Each Side • 7.5 oz. Cotton-poly blend

Apron Shown: 607HBA2-WH

APRONS ARE EASILY EMBROIDERED WITH YOUR FAVORITE SEAL OR LOGO

WWW.CHEFREIVAL.COM | 800.352.CHEF





605WAFH-*

Three front
pockets

23"w x 12"h
(58 x 30 cm)

***WH, BK,
NV, RB, RD,
BG, HG, GN**



* Specify color
choice after
item number:
Example:
605WAFH-WH

Professional Waist Apron with Pockets

Three Pocket Waist Apron features front pockets for iPad, guest checks, check presenters, pens, etc... all the tools of the trade.
It looks good. It's short. It's as simple as that.

3 Front Pockets large enough to hold an iPad

7.5 oz. Cotton-poly blend • Long 45" Ties on Each Side

Apron Shown: 605WAFH-NV

APRONS ARE EASILY EMBROIDERED WITH YOUR FAVORITE SEAL OR LOGO

WWW.CHEFREIVAL.COM | 800.352.CHEF



Chef®
24/7
REVIVAL

**603FW**

Folds to:
34"w x 17"h
(86 x 43 cm)

WH - White**604FW-BK**

Folds to:
34"w x 17"h
(86 x 43 cm)

BK - Black

WH

BK

4-Way Aprons

Stay clean and fresh throughout your shift with the 4-Way Apron. 4-sided construction means you need only flip the apron or turn it around to reveal a clean side. No need to go searching for a clean apron, it's like having four aprons in one.

603FW & 604FW-BK

7.5 oz. Cotton-poly blend
Long 45" Ties on Each Side

603FWPS-BK 100% Spun Polyester
41" Ties

Apron on Model: 603FW



Apron Shown:
603FWPS-BK

603FWPS-BK

28"w x 17"h
(71 x 43 cm)

BK - Black

BK

Chef®
24/7
REVIVAL



605PS-BK

24" w x 12" h
(61 x 30 cm)

BK -Black

BK

3-Pocket Waist Apron

3 Pocket Waist Apron features front pockets for iPad, guest checks, check presenters, pens, etc... all the tools of the trade.

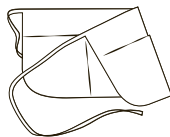
3 Compartment Front Pocket

Large Pocket can hold an iPad

100% Spun Polyester • Long 41" Ties on Each Side

Apron Shown: 605PS-BK

Reversible 3-Pocket Waist Apron



605REV-BK

24" w x 12" h
(61 x 30 cm)

BK -Black

BK

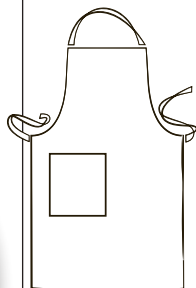


Apron Shown: 605REV-BK

Stay clean and fresh throughout your shift with our Reversible Waist Apron. Reversible design means you need only flip the apron to reveal a clean side and 3 clean pockets.

3 Pockets on Both Sides large enough to hold an iPad

7.5 oz. Poly-cotton blend • Long 45" Ties on Each Side

**601BAC-***

Side patch pocket

28" w x 34" h
(71 x 86 cm)8" x 8"
(20 x 20 cm)
side pocket***WH, BK,
NV, RB, RD,
BG, HG, GN**

WH

BK

RD

BG

NV

RB

HG

GN

* Specify color choice after item number.
Example:
601BAC-WH

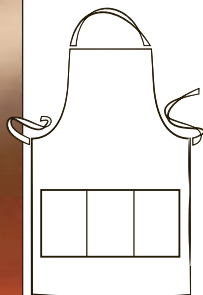
Full Length Bib Apron

Our Full Length Bib Apron portrays a polished and professional image. A variety of colors to coordinate with nearly any environment or decor. A handy 8"x 8" side patch pocket holds iPad, guest checks and pens.

Side Patch Pocket large enough to hold an iPad

7.5 oz. Cotton-poly blend

Apron Shown: 601BAC-RD



601BAO-3-*

Adjustable
neckstrap clip3-compartment
pocket28" w x 30" h
(71 x 76 cm)***WH, BK,
NV, RB, RD,
BG, HG, GN**

* Specify color
choice after
item number.
Example:
601BAO-3-WH

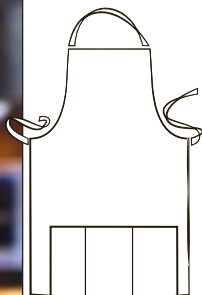


Gourmet Professional Full Length Bib Apron

Our Gourmet Full Length Bib Apron portrays a polished and professional image. An adjustable neck strap ensures a perfect fit. Variety of colors to coordinate with nearly any environment. Three front pockets hold guest checks, check presenters, pens and more.

3-Compartment Pocket can hold an iPad • 7.5 oz. Cotton-poly blend

Apron Shown: 601BAO-3-BK



602BAFH-*

3-compartment
pocket

28" w x 25" h
(71 x 64 cm)

***WH, BK,
NV, RB, RD,
BG, HG, GN**



* Specify color
choice after
item number.
Example:
602BAFH-WH

Professional Bib Apron

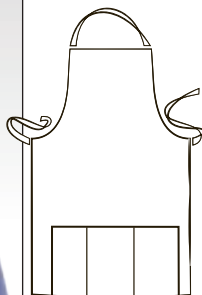
Our Professional Bib Apron is perfect for front-of-the-house use.
Variety of colors to coordinate with nearly any environment or decor.
Handy 3-front pockets hold iPad, guest checks,
check presenters, pens and more.

3-Compartment Pocket can hold an iPad

45" Ties on Each Side • 7.5 oz. Cotton-poly blend

Apron Shown: 602BAFH-NV





602PS-BK

3-pockets

27" w x 24" h
(69 x 61 cm)

BK - Black

BK

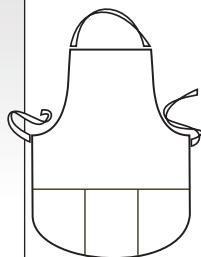
3-Pocket Bib Apron

Our Three Lower Pocket Bib Apron is a versatile and professional-looking apron. Front pockets are large enough to hold iPad, guest checks, check presenters, pens and more.

3-Compartment Pocket can hold iPad

40" Ties on Each Side • 100% Spun Polyester

Apron Shown: 602PS-BK



612BAFH-*

Adjustable
neck band

3-pockets

28" w x 27" h
(71 x 69 cm)

***WH, BK,
NV, RB, RD,
BG, HG, GN**



* Specify color
choice after
item number.
Example:
612BAFH-WH



Adjustable 3-Pocket Bib Apron

Our Adjustable 3-Pocket Bib Apron is ideal for front-of-the-house use.

The adjustable neck band ensures a perfect fit.

Handy three pockets are large enough to hold iPad, guest checks,
check presenters, pens and more.

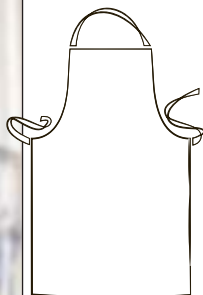
3-Compartment Pocket

45" Ties on Each Side • 7.5 oz. Cotton-poly blend

Apron Shown: 612BAFH-BG

APRONS ARE EASILY EMBROIDERED WITH YOUR FAVORITE SEAL OR LOGO

WWW.CHEFREIVAL.COM | 800.352.CHEF

**600PS-NP-BK**

No pockets

27" w x 32" h
(69 x 81 cm)**BK** - Black

BK

600PS-NP

No pockets

27" w x 32" h
(69 x 81 cm)**WH** - White

WH

No Pocket Bib Apron

Our No Pocket Bib Apron portrays a clean and professional look.
No pocket design is great for institutions.

No Pocket Design • 41" Ties

100% Spun Polyester

Apron Shown: 600PS-NP-BK

**625CBA-*****2-Front Pockets****19" w x 28" h
(48 x 71 cm)*****BK, RB, RD**

BK

RD

RB

* Specify color
choice after
item number.
Example:
625CBA-WH

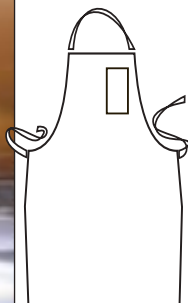
Cobbler Apron

Cobbler Bib Apron is designed with adjustable side ties and a crew neck.
Handy 2-front pockets hold guest checks, check presenters,
pens and more.

2-Front Pockets

7.5 oz. Cotton-poly blend

Apron Shown: 625CBA-RD



Thermometer/
Pencil Pocket

WH

600BAW

34"w x 34"h
(86 x 86 cm)

WH - White

Extra Wide

600BAW-XL

38"w x 30"h
(97 x 76 cm)

WH - White

Deluxe Fabric

600BAW-D

Durable Ties

34"w x 34"h
(86 x 86 cm)

WH - White

610BAC

36"w x 40"h
(91 x 102 cm)

WH - White

Economy Bib Aprons

A great basic Bib Apron with front thermometer/pencil pocket is comfortable and portrays a polished and professional image.

Easy Access Thermometer/Pencil Pocket • Duck Cloth

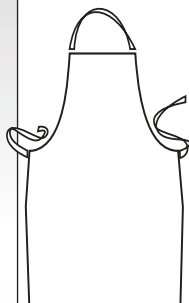
600BAW 65/35 Cotton-poly

600BAW-XL 7.5 oz. blend 65/35 Cotton-poly

600BAW-D 55/45 Cotton-poly

610BAC 100% Cotton

Apron Shown: 600BAW



600BAW-NP

No pockets

34" w x 34" h
(86 x 86 cm)

WH - White

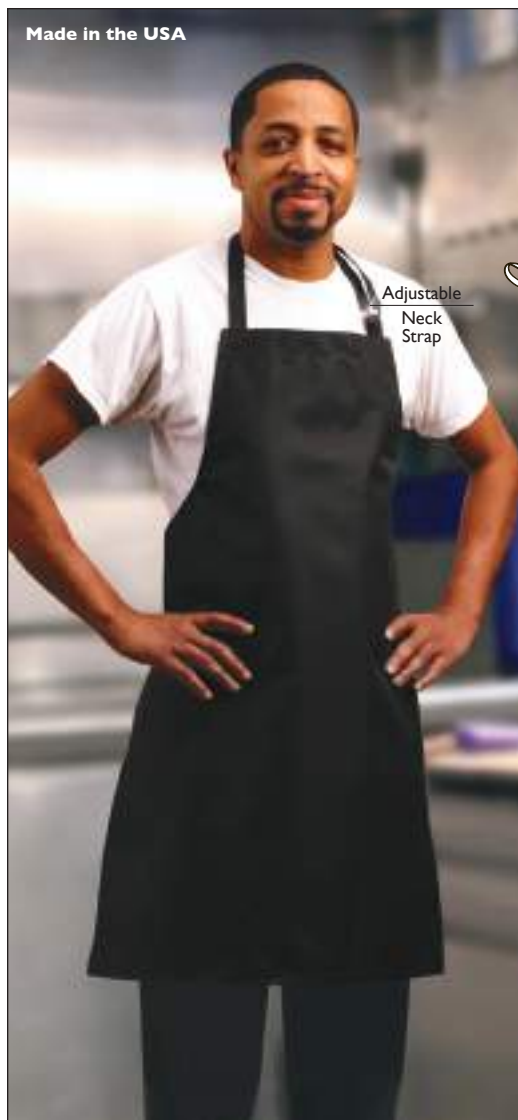
WH

Economy No Pocket Bib Apron

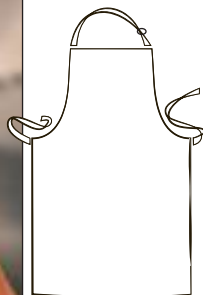
A great basic Bib Apron. No pocket design ideal for screen printing.
Comfortable and portrays a polished and professional image.

Poly blend 65/35 Duck Cloth

Apron Shown: 600BAW-NP



Made in the USA

Adjustable
Neck
Strap**601MAJ**Waterproof and
Fire-Retardant
Bib ApronPolyester With
Vinyl BackingAdjustable
Neck Strap27" w x 33" h
(69 x 84 cm)**BK** - Black

BK

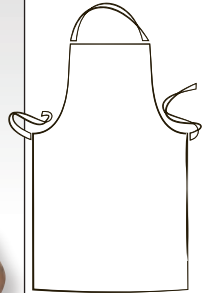
"Majesty" Bib Apron

The Institutional "Majesty" Vinyl-Backed Bib Apron provides excellent protection in institutional and commercial foodservice environments. This bib apron features a vinyl backing that is fire-retardant and waterproof. An adjustable neck strap ensures a secure fit.

Waterproof and Fire-Retardant Bib Apron

Polyester With Vinyl Backing • Adjustable Neck Strap

Apron Shown: 601MAJ

**601NP-***

No pockets

45" Ties

28"w x 34"h
(71 x 86 cm)***WH, BK,
RD, BG, NV,
RB, HG, GN**

* Specify color
choice after
item number.
Example:
601NP-WH

Utility Bib Apron

This Institutional Bib Apron is a clean, no-pocket design,
ideal for institutional and commercial foodservice environments..

Long 45" Ties on Each Side

7.5 oz. Cotton-poly blend

Apron Shown: 601NP-BG



Chef Headwear

Classic Chef Toque

Item	Description
H057	9" (23 cm) White , Poly-cotton blend

- Adjustable headband
- Fits most
- Includes carry bag



Pleated Chef Hat

Item	Description
CH-EURO	9" (23 cm) White , Poly-cotton blend

- Pleated • 1 Size/Adjust



Chef Hat

Item	Description
H400WH	13" (33 cm) White , Poly-cotton blend
H400BK	13" (33 cm) Black , Poly-cotton blend

- Adjustable headband



Disposable Chef Hats

Item	Description
H048	7" (18 cm) White , Non-woven fiber
H049	8½" (22 cm) White , Non-woven fiber

- Pinstripe hat with adhesive closure • Fits most
- 50 hats per case - Sold by the case



Chef Beanie

Item	Description
H060BK	Black , 100% Cotton

- Chef Logo • Elastic headband

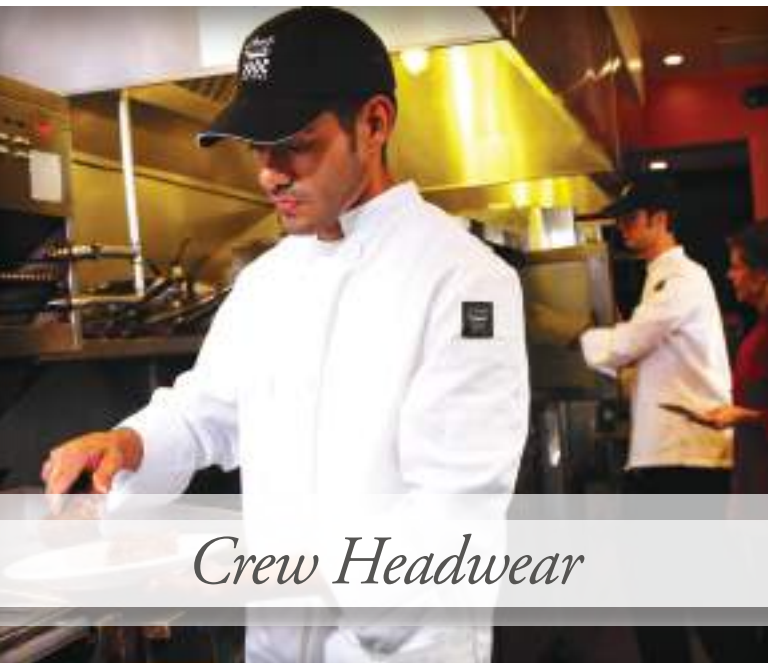
Standard Beanie embroidered as shown

Chef Berets

Item	Description
H036 WH	White , Poly-cotton blend
H036 BK	Black , Poly-cotton blend

- Adjustable head strap • Fits most





Crew Headwear



Baseball Caps

Item	Description
H063WH	White, 100% Cotton
H064BK	Black, 100% Cotton



- Adjustable head strap
- Standard Cap embroidered as shown with Chef Logo

Custom Embroidered Baseball Caps

One size fits most / Adjustable back



Available in 2 cap colors



Black (BK)



White (WH)

Requirements:

- Your logo submitted in any of the following formats: EPS, TIFF, PDF, JPEG
- 2 week lead time
- Embroidered caps limited to 1 logo or 2 lines of embroidery
- Available for purchase without embroidery

Item	Description
H067-*	Custom embroidered baseball cap

* Specify color choice after item number: Example: H067-BK



Disposable Corporate Chef Hat

Item	Description
H055	7" Tall (18 cm) White , Non-woven fiber
H056	9" Tall (13 cm) White , Non-woven fiber

25 hats per pack

Disposable Chef Hat Flair Style

- Adjustable size tab
- Ventilation holes

Item	Description
CHR12-V	12" Tall (31 cm) White , Deluxe viscose non-woven material

50 hats per case - Sold by the case

CHR12-P	12" Tall (31 cm) White , Paper
---------	--

100 hats per case - Sold by the case



Disposable Chef Hat Euro Style

Item	Description
DCH100	9" (23 cm) White , Paper with linen finish

100 hats per case (4 boxes of 25) - Sold by the case

- "Touch and Seal" size adjustment
- Includes sweatband

Disposable Overseas Cap

Item	Description
DRC100	White , One size fits most, Paper

- Adjustable self-locking headband

1,000 hats per case (10 boxes of 100)

Sold by the case





H009



*Pill Box Hat
with Mesh Top*

- Mesh top keeps you cooler

Item	Description
H002-*	WH- White , Poly-cotton blend
H008-*	BK- Black , Poly-cotton blend
H009-*	HT- Houndstooth , Poly-cotton blend

* When ordering, add size code to item number: R, XL
Example: H002-XL

Hat Sizes:

R = 20"-22" (51-56 cm)
XL = 22"-23½" (56-60 cm)



Neckerchiefs/Bandanas

33" • Poly-cotton blend



Item	Description
H500BK	Black neckerchief
H500GD	Gold neckerchief
H500HG	Hunter Green neckerchief
H500HT	Houndstooth neckerchief
H500NV	Navy neckerchief
H500RB	Royal Blue neckerchief
H500RD	Red neckerchief
H500WH	White neckerchief

H020HT

Scarf Hats

Item	Description
H020BK	Black , Poly-cotton blend
H020HT	Houndstooth , Yarn dyed poly-cotton
H023WH	White , Poly-cotton blend



Hairnets

Item	Description
DHN500-BK-22	22" Black , Polypropylene
DHN500-BR	28" Brown , Polypropylene
DHN500-BL	28" Blonde , Polypropylene

- Made of soft, non-irritating material

1,440 Hairnets per case (10 boxes of 144)
- Sold by the case



Beard Cover

Item	Description
BC1000	White , Polypropylene

- Made of soft, non-irritating material

Beard Covers 1,000 per case
- Sold by the case



Bouffant Caps

Item	Description
BCAP110CW	White (W) , Polypropylene
BCAP110CB	Blue (B) , Polypropylene

- 24" (61 cm) Elastic fit
- Non-irritating anti-static material
 - Lint-free
 - Flame resistant

Bouffant Caps 1,000 per case
- Sold by the case



Towels



Bar Mop Towels

Ribbed:

Unique narrow-ribbed construction offers greater strength, durability and longevity than other bar towels

- 100% high grade absorbent Cotton

16" x 19" (406 x 482 mm)

Item	Description
RIBBED	
700BRT24	24 oz./doz.
700BRT28	28 oz./doz.
700BRT32	32 oz./doz.



Towels are sold and packed by dozen

Full Terry:

Unique narrow-ribbed construction offers greater strength, durability and longevity than other bar towels

Item	Description
FULL TERRY	
701BTT19	19 oz./doz., 80/20 Poly-cotton 14" x 17" (356 x 432 mm)
701BTT30	30 oz./doz., 100% Cotton 16" x 19" (406 x 482 mm)

Oversized Colored Towels



Multi-purpose towel, cotton terry that is ultra-absorbent and designed to last

- Extra-large size handles the largest spills with ease
- 100% Cotton Terry

Item	Description	Size
700BRT-BR	Brown, Extra long	16" x 26"
700BRT-NV	Navy, Extra long	(406 x 660 mm)

Towels are sold and packed by dozen



Microfiber Towels

Item	Color	Size
MF100-BL	Blue	16" x 16" (406 x 406 mm)

Towels are sold and packed by dozen

- Absorbs nearly 7 times its own weight in liquids
- Thousands of microscopic fibers pick up and hold dust & dirt
- Hypoallergenic, lint-free, non-abrasive cloth eliminates streaking

Striped Bar Towels



Item	Color	Size
	Blue Stripe (BLS)	
700BRT-*	Gold Stripe (GLS)	16" x 19"
	Green Stripe (GRS)	(406 x 482mm)
	Red Stripe (RDS)	

* Specify desired color after item number

Example: 700BRT-GLS

Towels are sold and packed by dozen

- 100% Cotton (32 oz.)
- Color stripes allow color-coding for specific uses

Waffle-Weave Bar Towel



Item	Color	Size
700WT	Natural Color	18" x 18" (457 x 457 mm)

Towels are sold and packed by dozen

- 100% Cotton
- Waffle-weave design provides extra scrubbing ability

Herringbone Towels



Item	Color	Size
703HB	Green Stripe	15" x 26" (381 x 660 mm)
703HB28	Mixed Colors	20" x 28" (508 x 711 mm)

Towels are sold and packed by dozen

- 100% Cotton • Low lint kitchen towels
- Highly absorbent • Striped, heavyweight

Glass Polishing Towel

Item	Description	Size
702GT	Red pinstripes	16" x 29" (406 x 737 mm)

Towels are sold and packed by dozen

- 100% Cotton
- Hypoallergenic, lint-free, non-abrasive cloth eliminates streaking and is gentle on glassware
- Absorbs nearly 7 times its own weight in liquids
- Thousands of microscopic fibers pick up and hold dust & dirt



Multi-Stripe Towels

Item	Description	Size
705MSK	Assorted Designer Stripes	15" x 26" (381 x 660 mm)

Towels are sold and packed by dozen

- 100% Cotton Terry
- High quality construction

Waffle-Weave Dish Cloth



Item	Description	Size
706DC	Assorted Designer Colors	13" x 14" (330 x 356 mm)

Towels are sold and packed by dozen

- 100% Cotton
- Waffle weave design provides extra scrubbing ability

Heavyweight Bar Mop Towels

- 100% high grade absorbent Cotton



Item	Description	Size
HTI250W	Full Terry (40 oz.)	15" x 25" (381 x 635 mm)
HTI275W	Full Terry (44 oz.)	16" x 27" (406 x 686 mm)

Flour Sack Towels



- 100% Cotton
- Lightweight flour sack material

Item	Description	Size
704FSTW	Flour Sack Towel	22" x 36" (559 x 914 mm)
704FST36	Flour Sack Towel	35" x 35" (889 x 889 mm)

Oversized Chef Towel



Item	Description	Size
HTI15GS	Green Stripe	15" x 25" (381 x 635 mm)

- 100% Cotton Terry (44 oz.)
- Premium grade, 44-ounce weight
- Larger size for versatile use in the kitchen

Chef Revival was founded in 1986 by chefs, who after years of working long hours in uncomfortable uniforms, were determined to develop a line of chef apparel that performed as well as it looked. Today's **Chef Revival** team works closely with chefs in working foodservice operations to continually develop new products and features to help chefs look and perform their best. It's why we are now recognized around the world as the industry's leading premium brand of chef apparel. And, after more than 20 years of building a brand name that's synonymous with quality, style, comfort and value, we feel like we are just getting started.

This catalog is not a complete list of all our products:
Jackets • Pants • Aprons • Headwear • Towels
 For full up-to-date listing, please visit our website:

ChefRevival.com



QUALITY IN HOUSE

Embroidery & Monogramming**QUALITY GUARANTEED**

Our state-of-the-art embroidery machines create designs that are precise, clean and impressive.

**HOW TO ORDER**

Your logo can be embroidered on many items (aprons, jackets, hats, napkins, etc.). There is a one time set-up/digitization charge. Charges will vary depending upon stitch count. Once the logo is prepared, you will be advised of the appropriate costs.

Please submit logos in either PDF, JPEG, EPS or TIFF formats.

PLEASE SUBMIT FILES TO:

Customer Care at: **customercare@chefrevival.com**

For embroidery orders add 10 working days from receipt of embroidery confirmation. Embroidered garments cannot be returned. Please check your garment sizes and embroidery requests for accuracy.

**COLOR OPTIONS:**

Choose from a vast array of colors. Please have the name of your color or Pantone number readily available.

FONT OPTIONS:

Listed below are some of our more popular font styles.

FONT 10

Chef

FONT 50

Chef

FONT 20

CHEF

FONT 60

Chef

FONT 30

Chef

FONT 70

Chef

FONT 40

CHEF

FONT 80

Chef

THE BEST IN THE BUSINESS!



COLLAR/SLEEVE OPTIONS:

Embroidered flags for collars and sleeves are available, call Customer Care for ordering and pricing information.



BASIC EMBROIDERY TIPS

Embroidery placement is referred to as from the vantage point of someone wearing the garment.

JACKETS: For best results, please limit total characters (including spaces) to 16 or less.

WOMEN & EXTRA SMALL JACKETS: Most logos must be reduced in size and it is recommended that no more than 12 letters are used.

METRO JACKETS: No lines or logos on the right side of the chest.

BIB APRONS: Standard logo placement is top center.

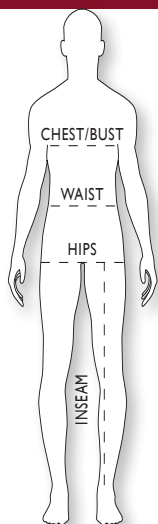
FOUR-SIDED APRONS: Standard placement is top right hip or bottom left (above Chef logo).

BISTRO APRONS: Standard placement is top left hip framed across from pocket. Bottom left and right are also available.

Call Customer Care if you have any questions regarding our state-of-the-art custom embroidery:

800.352.CHEF

SIZING CHART



SIZING CHART:

INCH & CENTIMETER MEASUREMENTS

JACKETS: Order size according to your chest or hip measurements, whichever is larger. If measurements are in between sizes, order the larger size.

- **CHEST/BUST** - Measure over clothing to be worn. Measure around fullest part of chest or bust, under the arms and around shoulder blades. Keep tape straight and level.

* Sizes 6X and above are Custom Orders.
Please call Customer Care for lead times.

INCHES	XXS	XS	S	M	L	XL
--------	-----	----	---	---	---	----

JACKETS

Chest (inch)	•	32-34	36-38	40-42	44-46	48-50
--------------	---	-------	-------	-------	-------	-------

LADIES JACKETS

Female U.S.	•	2	4-6	8-10	12-14	16-18
-------------	---	---	-----	------	-------	-------

Bust (inch)	•	32-33	34-35	36-37	38-40	41-43
-------------	---	-------	-------	-------	-------	-------

Waist (inch)	•	25-26	27-28	29-30	31-33	34-36
--------------	---	-------	-------	-------	-------	-------

Hip (inch)	•	35-36	37-38	39-40	41-43	44-46
------------	---	-------	-------	-------	-------	-------

PANTS

Waist (inch)	•	24-26	28-30	32-34	36-38	40-42
--------------	---	-------	-------	-------	-------	-------

Hip (inch)	•	34-36	38-40	42-44	46-48	50-52
------------	---	-------	-------	-------	-------	-------

Inseam (inch)	•	30	32	33	34	34
---------------	---	----	----	----	----	----

LADIES PANTS

Waist (inch)	18-19	20-21	22-23	24-25	26-27	28-30
--------------	-------	-------	-------	-------	-------	-------

Hip (inch)	38	40	42	44	46	48
------------	----	----	----	----	----	----

Inseam (inch)	30	30	32	33	34	34
---------------	----	----	----	----	----	----

CENTIMETERS	XXS	XS	S	M	L	XL
-------------	-----	----	---	---	---	----

JACKETS

Chest (cm)	•	81-86	91-96	101-106	111-116	121-127
------------	---	-------	-------	---------	---------	---------

LADIES JACKETS

Female European	•	32	34-36	38-40	42-44	46-48
-----------------	---	----	-------	-------	-------	-------

PANTS

Waist (cm)	•	61-66	71-76	81-86	91-96	101-106
------------	---	-------	-------	-------	-------	---------

Hip (cm)	•	86-91	96-101	106-111	116-121	127-132
----------	---	-------	--------	---------	---------	---------

Inseam (cm)	•	76	81	83	86	86
-------------	---	----	----	----	----	----

LADIES PANTS

Waist (cm)	45-48	50-53	55-58	61-63	66-68	71-76
------------	-------	-------	-------	-------	-------	-------

Hip (cm)	96	101	106	111	116	121
----------	----	-----	-----	-----	-----	-----

Inseam (cm)	76	76	76	81	83	83
-------------	----	----	----	----	----	----



PANTS: Order size according to your waist or hip measurement, whichever is larger.

- **WAIST** - Measure around natural waistline above hip bones.
Don't hold your breath.
- **HIPS** - Measure around fullest part of hip.
- **INSEAM** - Measure from base of crotch seam to top of shoe to be worn.



* Sizes 6X and above are Custom Orders.
Please call Customer Care for lead times.

2X	3X	4X	5X	6X*	7X*	8X*
52-54	56-58	60-62	64-66	68-70	72-74	76-78
20-22	24-26	28-30	32-34	•	•	•
45-47	49-51	53-55	57-59	•	•	•
38-40	42-44	46-48	50-52	•	•	•
48-50	52-54	56-58	60-62	•	•	•
44-46	48-50	52-54	56-58	•	•	•
54-56	58-60	62-64	66-68	•	•	•
34	34	34	34	•	•	•
32-34	36-38	40-42	•	•	•	•
50	52	54	•	•	•	•
34	34	34	•	•	•	•
2X	3X	4X	5X	6X*	7X*	8X*
132-137	142-147	152-157	162-167	•	•	•
50-52	54-56	58-60	62-64	•	•	•
111-116	121-127	132-137	142-147	•	•	•
137-142	147-152	157-162	167-172	•	•	•
86	86	86	86	•	•	•
81-86	91-96	101-106	•	•	•	•
127	132	137	•	•	•	•
86	86	86	•	•	•	•



Designed By Chefs For Chefs®

CHEF REVIVAL

**44 River Street
Southbridge MA 01550**

Tel: (508) 765-0201

Fax: (508) 764-2897

1-800-352-CHEF (2433)

email: customercare@chefrevival.com

ChefRevival.com



www.facebook.com/sjchefrevival